

the SILVERWOOD



Similar Elevation - 3 Car Garage

2,264 sq. ft.
Look-Out Lower Level
N8086 Woody Lane (lot 119)
Autumn Ridge | Ixonia
Move In March

All Tim O'Brien Homes are 3rd party tested, certified and exceed the Energy Star® and Green Built Standards. This home is designed to save you **\$35/month** on heating/cooling bills.

✿ Spacious 2-Story Design with 4 BR and 2.5 BA with **Open Concept Design**

✿ **Kitchen** has Granite Countertops, Staggered Height Cabinets, Island with overhang, Pantry, and GE Stainless Steel Dishwasher and Microwave and open to Breakfast Area.

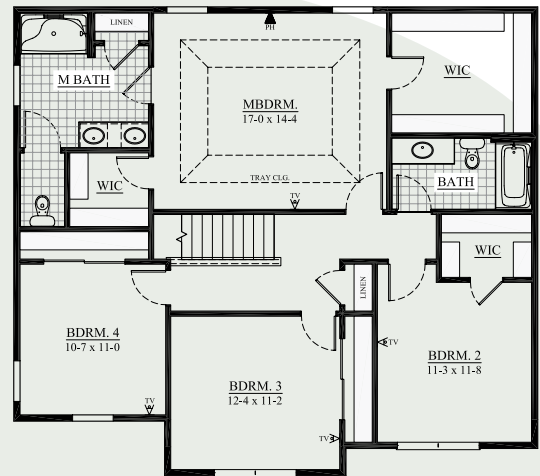
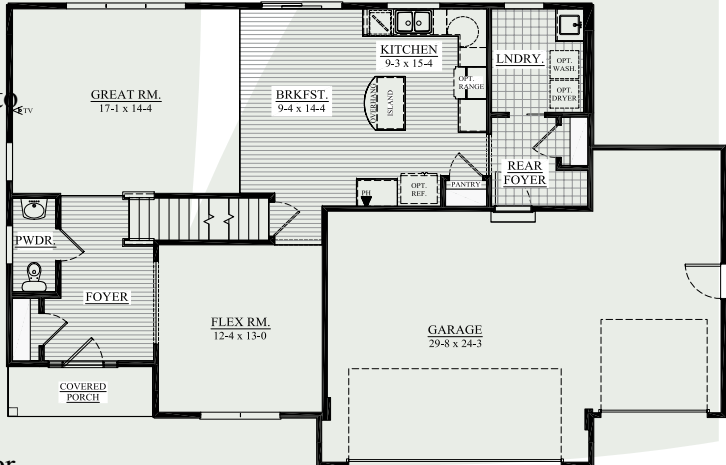
✿ **Spacious Great Room** is open to breakfast area and kitchen for easy entertaining.

✿ Increase Your Living Space with **Walk-Out Lower Level** with Full Bath Rough-in for Future Expansion

✿ **Luxury Master Bedroom Suite** with Tray Ceiling, Two Large Walk-in Closets, Double Bowl Vanity, Over-size Shower, Linen and Water Closet

✿ Other highlights include Flex Room, Laminate Floors, Rounded Corners, Six-Panel Pine Doors, Large Rear Foyer has closet and Spacious Laundry Room, and More!

✿ **Money-Saving Eco-Friendly Features:** York 95% High-Efficiency Furnace, Closed-Cell spray foam insulation in Box Sills, Tyvek home wrap, 15-Year Dry Basement Guarantee and more.

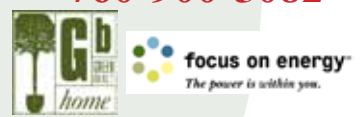


See the Difference in the Details!

Interested in Building this Design, Call for Pricing!



Call Matt Petushek
760-900-5082



Visit us online at: TimOBrienHomes.com

N16 W24132 Prairie Ct., Suite 220 | Waukesha, WI 53188 | 262.542.5750

All dimensions are approximate. This information is not guaranteed and is subject to verification. Builder reserves the right to make changes without notice. Copyright 2011 Tim O'Brien Homes, Inc.

