

the LILAC



1,750 sq. ft.
3247 Sherman Parc Circle (lot 33)
Walk-Out Lower Level
Sherman Parc | Jackson

All Tim O'Brien Homes are 3rd party tested, certified and exceed the Energy Star® and Green Built Standards. This home is designed to save you **\$336/year** on utility bills,

Exterior details include stone belt-line, covered porch, and **3-Car Garage**.

Split-bedroom ranch with 3 BR and 2 BA with Open Concept Design - Great for Entertaining.

Kitchen has Raised Snack Bar, Staggered Height Cabinets with Crown Molding, Large Walk-In Pantry, and Stainless Dishwasher & Microwave.

Great Room includes a Direct Vent Fireplace with Raised Hearth and Stone Detail, Tray Ceiling and Wall of Windows.

Luxury Master Bedroom Suite has Tray Ceiling, Walk-In Closet, Double Bowl Vanity, Linen Closet and Oversize Shower.

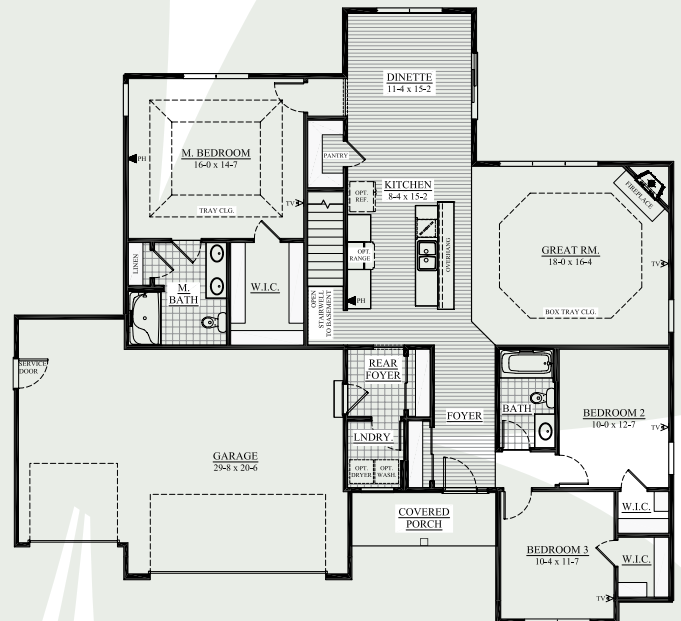
Other Highlights include Laminate Floors, Rounded Corners, White Painted Trim Throughout, Rear Foyer has Private Laundry and Closet, and Much More!

Money-Saving Eco-Friendly Features:

York 95% High-Efficiency Furnace, Low-E Windows, 15-Year Dry Basement Guarantee, Closed-Cell spray foam insulation in Box Sills, Tyvek home wrap, Moen® WaterSense® Vanity Faucets & Shower Heads, and much more.

See the Difference in the Details!

Interested in Building this High Performance Home, Call for Pricing!



Call Jackie Guansing
(262) 378-9112
for a Tour!

TIM O'BRIEN
homes

Building for the way you live

Visit us online at: TimOBrienHomes.com

N16 W24132 Prairie Ct., Suite 220 | Waukesha, WI 53188 | 262.542.5750

All dimensions are approximate. This information is not guaranteed and is subject to verification. Builder reserves the right to make changes without notice. Copyright 2011 Tim O'Brien Homes, Inc.

