

the SILVERWOOD



2,208 sq. ft.

Look-Out Lower Level

1809 Stonebridge Rd. (lot 417)

Rolling Ridge South, Waukesha

Move In April

All Tim O'Brien Homes are 3rd party tested, certified and exceed the Energy Star® and Green Built Standards.

This home is designed to save you **\$35/month** on heating/cooling bills.

Space in the right place with this **2-Story Design** featuring 4 BR and 2.5 BA and Open Concept Design is ideal for entertaining.

Kitchen has **Granite Countertops**, Staggered Height Cabinets, Island with overhang, Pantry, GE® Stainless Steel Dishwasher & Microwave and open to Breakfast Area.

Cozy **Great Room** includes a Direct Vent Fireplace with Raised Hearth and box windows detail.

Increase Your Living Space with the **Look-Out Lower Level** with Full Bath Rough-in for Future Expansion

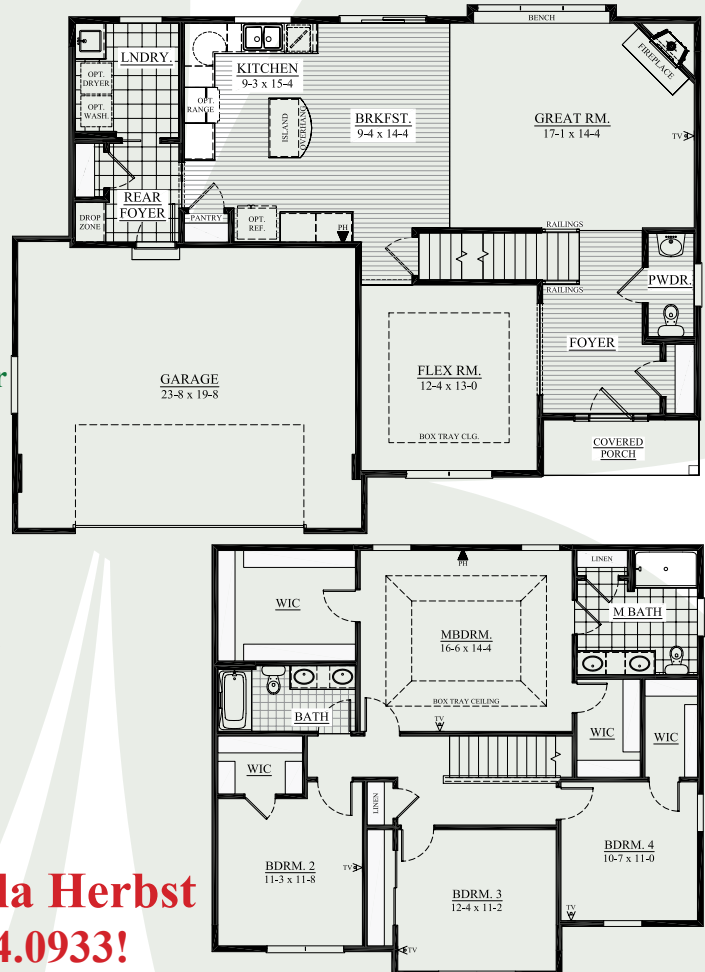
Luxury Master Suite with Tray Ceiling, Two Large Walk-in Closets, Double Bowl Vanity, Oversize Shower, and Linen Closet

Other highlights include Flex Room, Birch Hardwood floors, Rounded Corners, Six-Panel Pine Doors, Large Rear Foyer has Drop Zone, WIC, and Spacious Laundry Room, Secondary BR with WIC's and More!

Money-Saving Eco-Friendly Features:

York 95% High-Efficiency Furnace, Closed-Cell spray foam insulation in Box Sills, Tyvek home wrap, 15-Year Dry Basement Guarantee and more.

**Call Sheila Herbst
262.744.0933!**



See the Difference in the Details!

TIM O'BRIEN
homes

Building for the way you live

**Interested in Building
this Design, Call for Pricing!**

Visit us online at: www.TimOBrienHomes.com

N16 W24132 Prairie Ct., Suite 220 | Waukesha, WI 53188 | 262.542.5750

All dimensions are approximate. This information is not guaranteed and is subject to verification. Builder reserves the right to make changes without notice. Copyright 2011 Tim O'Brien Homes, Inc.

