








the HAWTHORN

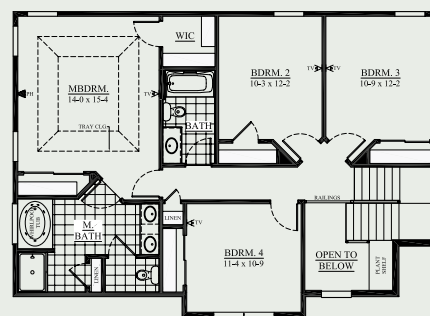
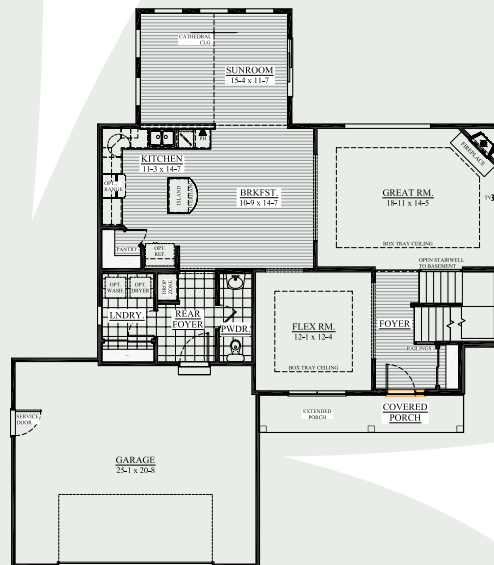


Similar Exterior

2,349 sq. ft.
N28 W24360 Single Tree Ct. (lot 5)
Look-Out Lower Level
Creekside Preserve | Pewaukee
Move In March

All Tim O'Brien Homes are 3rd party tested, certified and exceed the Energy Star® and Green Built Standards. This home is designed to save you **\$41/month** on utility bills,

-  Exterior details include stone and shake details, Covered front porch, and **2-Car Garage**.
-  Spacious **2-Story Design** with 4 BR and 2.5 BA with Open Concept Design and a relaxing Sunroom to bring in more light.
-  **Gourmet Kitchen** has Granite Countertops, Staggered Height Cabinets, Island with Snack Bar, Walk-In Pantry, and Stainless Dishwasher & Microwave.
-  **Great Room** includes a Direct Vent Fireplace with Raised Hearth and Stone Detail to Ceiling, Tray Ceiling and Wall of Windows
-  **Luxury Master Bedroom Suite** has Tray Ceiling, Dual Closets, Double Bowl Vanity, Shower, Whirlpool Tub, Linen Closet, and Ceramic Tile Flooring.
-  **Other Highlights** include Flex Room to make your own space, 9-ft First Floor Ceilings, Brazilian Teak Hardwood Floors, Rounded Corners, 6-Panel Pine Doors, Rear Foyer has Drop Zone and Private Laundry with Closet, and More!
-  **Money-Saving Eco-Friendly Features:** York 95% High-Efficiency Furnace, Low-E Windows, 15-Year Dry Basement Guarantee, Closed-Cell spray foam insulation in Box Sills, Tyvek home wrap, Moen® WaterSense® Vanity Faucets & Shower Heads, and much more.



Call Susan Miller Reese
262.720.3829
for a tour!

**See the Difference
in the Details!**

**Interested in Building
this High Performance Home,** *Building for the way you live*
Call for Pricing!

TIM O'BRIEN
homes

Visit us online at: TimOBrienHomes.com

N16 W24132 Prairie Ct., Suite 220 | Waukesha, WI 53188 | 262.542.5750

All dimensions are approximate. This information is not guaranteed and is subject to verification.
Builder reserves the right to make changes without notice. Copyright 2011 Tim O'Brien Homes, Inc.

