

the HAWTHORN

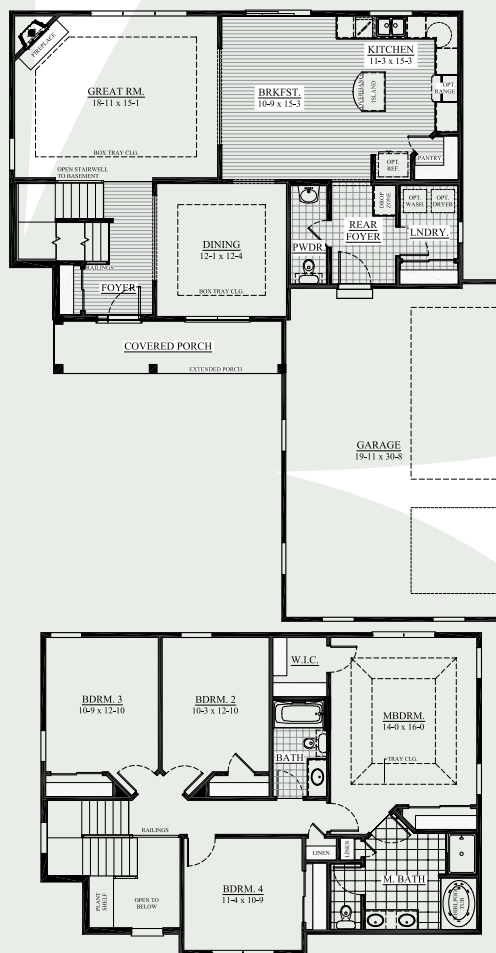


Similar Elevation - 3-Car Side-Entry Garage

2,213 sq. ft.
1862 River Lakes Rd. (lot 125)
Pabst Farm | Oconomowoc
Move In February

All Tim O'Brien Homes are 3rd party tested, certified and exceed the Energy Star® and Green Built Standards. This home is designed to save you **\$37/month** on utility bills,

- ✿ Exterior features include stone details, Covered front porch, and **3-Car Side-Entry Garage**.
- ✿ Spacious **2-Story Design** with 4 BR and 2.5 BA with Open Concept Design ideal for entertaining and gathering.
- ✿ **Gourmet Kitchen** has Granite Countertops, Staggered Height Cabinets, Island with Snack Bar, Walk-In Pantry, and Stainless Dishwasher & Microwave.
- ✿ **Great Room** includes a Direct Vent Fireplace with Raised Hearth and Stone Detail to Ceiling, Tray Ceiling and Wall of Windows. Open stairs lead to lower level.
- ✿ **Luxury Master Bedroom Suite** has Tray Ceiling, Walk-In Closet, Additional Closet, Double Bowl Vanity, Whirlpool Tub, Shower, Private Water Closet and Ceramic Tile Flooring.
- ✿ **Other Highlights** include Flex Room to make your own space, 9-ft First Floor Ceilings, Ark Exotic Hardwood Floors, Rounded Corners, 6-Panel Pine Doors, Rear Foyer has Drop Zone and Private Laundry with Closet, and Much More!
- ✿ **Money-Saving Eco-Friendly Features:** York 95% High-Efficiency Furnace, Low-E, Argon Filled Windows, 15-Year Dry Basement Guarantee, Closed-Cell spray foam insulation in Box Sills, Tyvek home wrap, Moen® WaterSense® Vanity Faucets & Shower Heads, and much more.



See the Difference
in the Details!

Interested in Building
this High Performance Home,
Call for Pricing!

TIM O'BRIEN
homes

Building for the way you live

Visit us online at: TimOBrienHomes.com

N16 W24132 Prairie Ct., Suite 220 | Waukesha, WI 53188 | 262.542.5750

All dimensions are approximate. This information is not guaranteed and is subject to verification.
 Builder reserves the right to make changes without notice. Copyright 2011 Tim O'Brien Homes, Inc.

Call Matt Petushek
(760) 900-5082
for a tour!

