

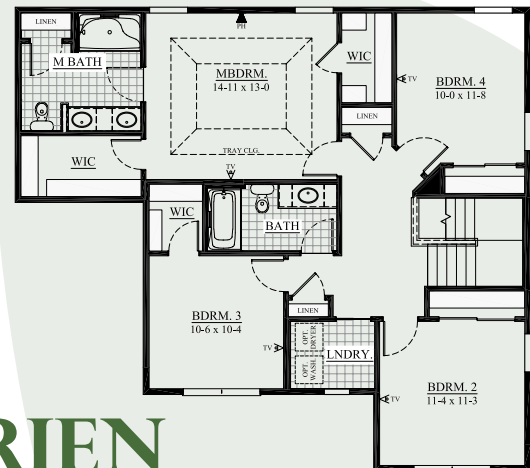
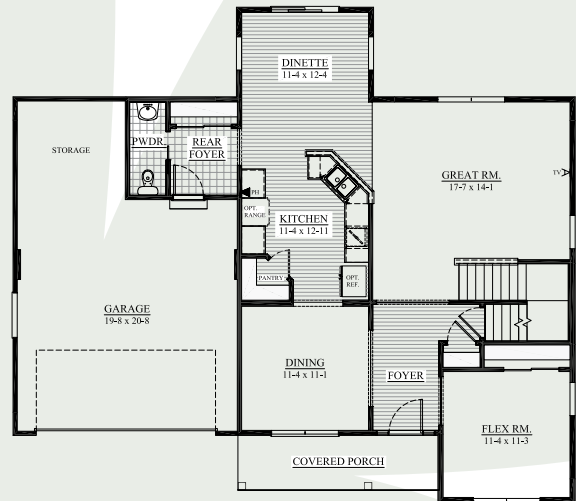
the BUCKEYE



2,280 sq. ft.
9809 W. Fountain (lot 122)
Riverview | Milwaukee
Move In April

All Tim O'Brien Homes are 3rd party tested, certified and exceed the Energy Star® and Green Built Standards. This home is designed to save you **\$38/month** on heating/cooling bills.

- Exterior details include stone, covered porch, and **2-Car Garage with extra storage area.**
- Spacious 2-story with 4 BR and 2.5 BA with Open Concept Design - Great for Entertaining.
- Kitchen** has Staggered Height Cabinets with Crown Molding, Walk-In Pantry, and Stainless Dishwasher & Microwave.
- Great Room** is open to kitchen and ideal for entertaining and gathering.
- Luxury Master Bedroom Suite** has Tray Ceiling, His-n-Her Walk-In Closets, Double Bowl Vanity, and Oversize Shower and Linen Closet.
- Other Highlights** include 2nd floor laundry, 9-foot first floor ceilings, Laminate Floors, Rounded Corners, White Painted Woodwork Throughout, and Much More!
- Money-Saving Eco-Friendly Features:** York 95% High-Efficiency Furnace, 15-Year Dry Basement Guarantee, Closed-Cell spray foam insulation in Box Sills, Tyvek home wrap, Moen® WaterSense® Vanity Faucets & Shower Heads, and much more.



See the Difference
in the Details!

Interested in Building
this High Performance Home,
Call for Pricing!

TIM O'BRIEN
homes

Building for the way you live

Call Susan Miller Reese
(262) 720-3829

Visit us online at: TimOBrienHomes.com

N16 W24132 Prairie Ct., Suite 220 | Waukesha, WI 53188 | 262.542.5750

All dimensions are approximate. This information is not guaranteed and is subject to verification.
Builder reserves the right to make changes without notice. Copyright 2011 Tim O'Brien Homes, Inc.

