

# Strawberry Glen

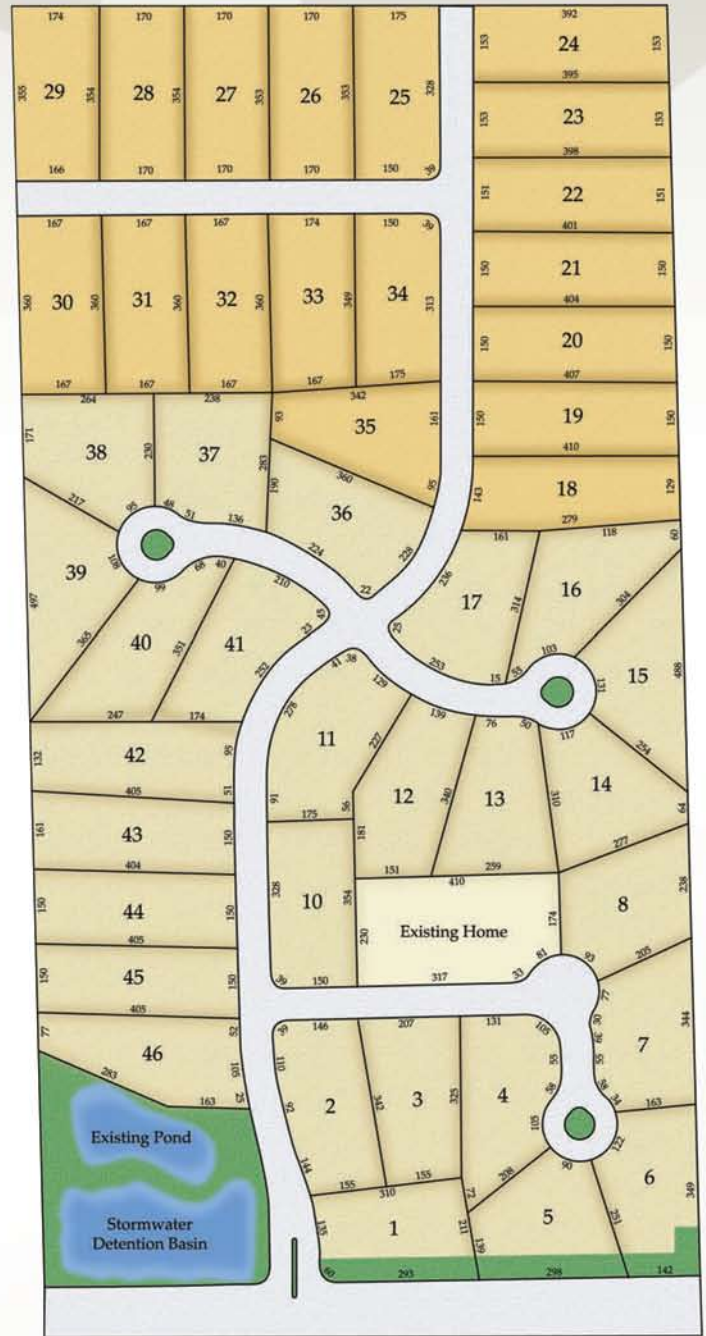
## Jackson



Welcome to Strawberry Glen, a community that exudes the charm of an old-fashioned family neighborhood, that was once speckled with a sea of strawberries. This picturesque countryside will feature estate-sized lots starting at 1.5 acres to retain the rural flavor of this exceptional setting. The entrance of Strawberry Glen will feature sparkling retention ponds with aerating fountains to welcome you home each day. This unique opportunity includes a total of 45 homesites. Strawberry Glen is located in the Town of Jackson, in Washington County and is one of the fastest growing communities in Wisconsin. The dynamics of its location features the close proximity to countless civic, family and recreational activities in every direction via the highway. While endeavoring to maintain its quaint old-fashioned main street of a vintage bygone era, Jackson also welcomes new shops and restaurants to its retail family.

Strawberry Glen was designed for those who appreciate the good things in life, and are looking for the perfect site on which to build their American dream.

Directions: Hwy 45 to Hwy 60, heading east approximately 6 miles to entrance. Alternate route is to take I-43 to Hwy 60, heading west approximately 6 miles to entrance.



Phase I      Phase II

Visit us online at: [TimOBrienHomes.com](http://TimOBrienHomes.com)

N16 W24132 Prairie Court, Suite 220 • Waukesha, WI 53188

262-542-5750 • Fax 262-542-9780

